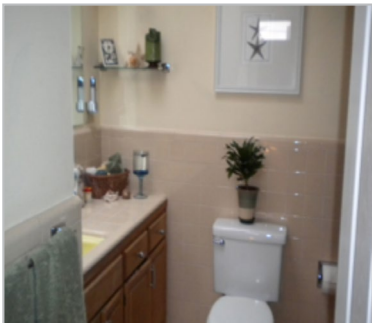
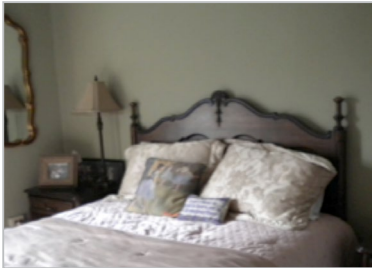




Converse

International School of Languages

HOMESTAY WITH AN AMERICAN FAMILY



DESCRIPTION AND AMENITIES:

- Typical travel time to CISL San Francisco is 30-45 minutes using public transportation.
- Private rooms include a bed with linens, a desk, and a lamp.
- Most CISL homestays have shared bathrooms, but a few with private bathrooms are available.
- Students have access to laundry machines.
- All homestays have **free Wi-Fi**.
- Students will eat meals with the homestay family (either breakfast **and** dinner or breakfast only).
- Students get to learn about American culture and speak English outside of school.
- Families are visited by the CISL Homestay Coordinator to ensure they meet CISL requirements.
- **Important note: CISL has a policy of never allowing two students of the same native language to stay with the same family at the same time.**

PRICE INFORMATION*

Private Room / Shared Bath	2 weeks only	3 weeks only	4 weeks or more	Additional night
Breakfast & Dinner	\$790	\$1065	\$335/week	\$60
Breakfast Only	\$740	\$975	\$300/week	\$55

*All prices are per person

Note: From June 1 to August 31, 2017 there will be an additional \$25 per week charge for homestay. Please arrive by 21:30 on your first day. Prices for a shared bedroom or a private bathroom are available upon request.

 CISL SAN FRANCISCO

605 Market St., Suite 1400
 San Francisco, California 94105 USA
 Tel: (1) 415.495.7470
 Fax: (1) 415.495.7467
 E-mail: sf@cisl.edu
 Skype: cisl.san.francisco