

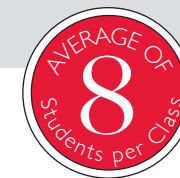


2025 Course Prices & Information

San Diego Adult Programs | Junior Programs

Since 1972





2025 San Diego Courses

English Programs	Lessons per Wk	Lesson Times	Price per week (starts any Monday)					
			1-2	3	4-7	8-12	13-24	25+
General English								
Standard	20	am	\$390	\$380	\$375	\$370	\$350	\$335
Standard + 1 Private Lesson/wk	21	am	\$475	\$465	\$450	\$445	\$425	\$415
Standard Plus (F1)	22	am/pm	x	x	\$380	\$375	\$355	\$330
Standard + 2 Private Lessons/wk (F-1)	22	am	x	x	\$525	\$515	\$500	\$485
Standard + 5 Private Lessons/wk (F-1)	25	am	x	x	\$740	\$730	\$720	\$710
Intensive (F1)	28	am/pm	x	x	\$450	\$445	\$425	\$410
Afternoon Elective Only	8	pm	\$190	\$190	\$190	\$190	\$190	\$190
Premier English (max 4 students per class)								
Executive English	20	am	\$975	\$970	\$965	\$960	\$950	930
Executive Intensive (F1)	28	am/pm	x	x	\$1,040	\$1,035	\$1,010	\$1,005

Intensive and Executive Intensive 28 lessons include 8 additional PM lessons of an afternoon elective
 Afternoon Elective choices include Conversation, Business English, & English for Academic Purposes.
 Private Lessons will be scheduled at a time of your convenience and teacher availability.
 4 weeks minimum for F-1 courses.

Private Lessons	Time	1 lesson	5 lessons	10 lessons	15 lessons	20 lessons
Standard Private	To be arranged	\$95	\$420	\$790	\$1,145	\$1,525
Executive Private	To be arranged	\$105	\$465	\$910	\$1,235	\$1,590

Test Preparation Course	Lessons per Wk	Lesson Times	Price per Session (start dates vary)		
			4 wks	7 wks	11 wks
B2 First (FCE)	20	am	\$1,600	\$2,800	\$4,400
CI Advanced (CAE)	20	am	\$1,600	\$2,800	\$4,400
IELTS	20	am	\$1,600	\$2,800	\$4,400

8 lessons of afternoon electives may be added for \$75/week (F-1)
 Afternoon Elective choices include Conversation, Business English, & English for Academic Purposes.
 Official exam fees not included

Test Preparation Course Start Dates	4 wks*	7 wks*	11 wks
B2 First (FCE)	May 12, Oct 27	April 21, Oct 6	Mar 24, Sep 8
CI Advanced (CAE)	May 5, Oct 27	April 14, Oct 6	Mar 17, Sep 8
IELTS	April 1, June 16, Oct 27	Feb 10, May 19, Oct 6	Jan 13, Apr 21, Sep 8

Exam Dates (Subject to change)

B2 First FCE	June 10, Nov 25
Advanced CAE:	June 4, Nov 26

* Alternative start dates are available. Please contact info@cisledu for more information.

Other Programs	Placement Fee	Course	Total CISL Cost
Career English*	\$950	\$2190 +	\$3140+
Academic Year Program (AYP)**	\$750	\$6800 +	\$7630+
University Pathway***	\$750	\$6800 +	\$7630+

*Placement between December 15 and January 15 is limited.

** Grossmont College tuition and costs not included.

*** AYP and Pathway prices based on Intensive English. Other courses may not be substituted. Additional weeks of study may be added.

COURSE DESCRIPTION

Standard English: A combination of speaking, listening, reading and writing.

Standard Plus (FI only): Standard class plus self-study Study Hall class.

Intensive English: Standard English plus a choice of afternoon elective.

Afternoon Elective-Conversation: Focus on fluency in speaking and pronunciation.

Afternoon Elective-Business: Focus on general business topics.

Afternoon Elective-English for Academic Purposes (EAP): Focus on academic skills (university-bound students).

Executive English: Accelerated course (premier english) focusing on developing skills needed in an English business environment.

Executive Intensive: Executive English (premier english) plus choice of afternoon elective (general class).

Career English: 6+ weeks of English classes followed by 6 - 8 weeks placement with a local business (This is not an internship).

Academic Year Program (AYP): CISL Intensive English course followed by one semester at Grossmont College. Begins May or August. AYP students receive assistance with College admission process.

University Pathway: 12+ weeks Intensive English plus EAP and assistance with University admission process.

Standard Private Lessons: Focus on areas of interest to the student with a certified English teacher.

Executive Private Lessons: Focus on areas of interest to the student with a certified Executive English teacher.

Family Program: Focus on practicing English in a fun, safe environment in customized private or semi-private lessons for children.

B2 First FCE: Preparation for success on "Cambridge English: First" at the B2 level exam to include practice speaking, listening, reading, and writing tests.

CI Advanced CAE: Preparation for success on "Cambridge English: Advanced" exam at the CI level to include practice speaking & writing tests.

IELTS: Preparation for success on IELTS exam to include practice tests.

LESSON TIMES:

(50 Minute Lessons)

am = Morning Classes:

Mon - Fri 9:00 am - 12:40 pm

(F-I) Plus Study Hall Class:

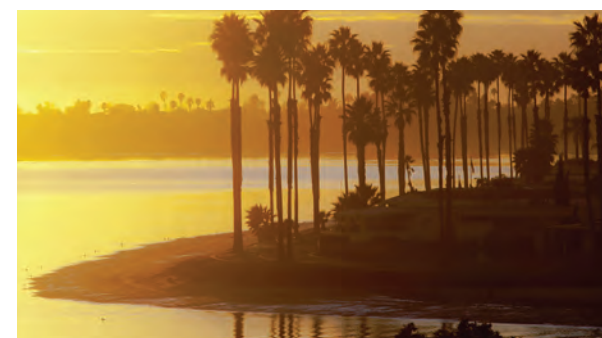
Wed 1:30 pm - 3:10 pm

pm = Afternoon Classes:







Mon -Thurs 1:30 pm - 3:10 pm

OTHER CHARGES

Application Fee (Non-refundable).....	\$160
Books/materials.....	\$0
Credit Card fees.....	3%-4%
Airport transfer (one way).....	\$150
LAX transfer.....	\$450 each way
Homestay Transfer (one way).....	\$120
CAE/FCE Exam Fee.....	\$400



ALL COURSES INCLUDE

-  Orientation
-  Placement Test
-  Full Activities Program
-  Books & Materials
-  Free Internet Access
-  Course Certificate and Final Report

Additional Information

Official Exam Information

There are separate fees for taking an official exam, which are not included in the course price and subject to change by the awarding body. If students plan to take an exam after a course, an extra week of accommodation may be necessary.

The official **Cambridge English** exam fee for B2 First and C1 Advanced is \$400. CISL is an authorized Cambridge English center.

For **IELTS**, it is the student's responsibility to register for the exam with the name exactly as it appears in the passport.

The official **IELTS exam** is \$255. Students must register and pay for this exam directly on the IELTS website at www.ielts.org

Academic Year Program (AYP)

For the Fall 2025 semester enroll no later than April 17th. For the Spring 2025 semester enroll no later than September 5th. Approximate price is \$7,600; books and tuition for Grossmont classes not included. Prices are subject to change by the college. Books for university classes not included. This price is based on a 16-week CISL Intensive course (including 12 weeks of EAP) and one semester at a community college. Accommodation is not included in this price. A \$750 administration fee will be required.

Pathway Program

The Pathway Program provides students admission to accredited, highly reputable American colleges or universities (often without a TOEFL or IELTS score). 12-week EAP class required.

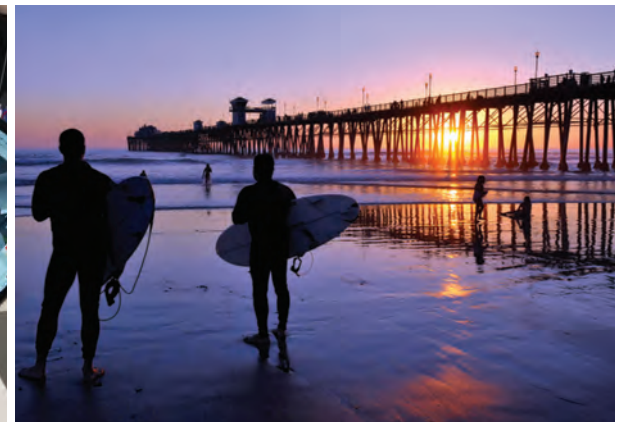
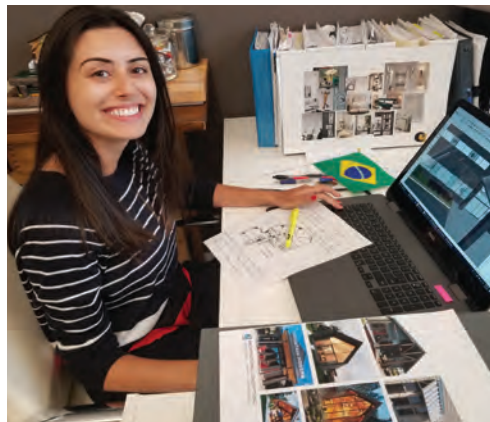
The length of your program will depend on your level of English. See price list (page 2) for English course prices. College prices and dates are different for each college. A \$750 administration fee will be required.

CISL at a Glance

- Capacity: 144
- Classrooms: 12
- Student Computers: 10
- Max Students in Class: 10
- Max Students in Premier English: 4
- Lesson Length: 50 minutes
- Minimum Course Length: 1 Week, F-1 visa students 4 weeks
- Number of Standard Levels: 10
- Student Lounge
- Computer Lab
- Student Microwaves
- Free Internet Access
- Certified Teachers

School Closure Dates:

January 1, February 17, May 26, July 4, September 1, Nov 27-28, December 25-26



2025 San Diego Accommodations

Homestay	Per Week	+ nights
<i>Homestay</i>		
Private room / shared bath - breakfast & dinner	\$410/wk	\$60
Private room / shared bath - breakfast only	\$350/wk	\$65
<i>Executive Homestay*</i>		
Private room & bath / breakfast & dinner	\$440/wk	\$70

*Executive Homestay available for Premier students only.

Residences	Per Week	+ nights
<i>State Street (4 week minimum)</i>		
Private room/private bath	\$499/wk	\$65
Double room/private bath*	\$299/wk	\$35
<i>University of San Diego Summer Residence **</i>		
Private room/private bath	\$585/wk	\$65
Double room/shared bath*	\$440/wk	\$35

*Two people need to book together, two twin beds, price per person.

** Exclusively available June 29 - Aug 10

Other Charges

Accommodation Placement Fee (non refundable)	\$160
Residence Reservation Deposit.....	\$250

ADDITIONAL INFORMATION

Homestay

All prices are per person.

Typical travel time by public transportation to the school from host family is 30-55 minutes.

Note: For arrivals from July 1st through August 31st there will be an additional \$25 per week charge.

USD Summer Residence

All prices are per person.

Commuter: Typical travel time by public transportation to the school is 30 min.

Note: Meals can be either purchased directly or on site.

State Street

All prices are per person.

State Street commute is approximately 15 min by foot.

Rooms Include: Free Wifi, television, telephone, mini refrigerator, and microwave.

Computer room, laundry room, and shared kitchen onsite.

No meals provided.

Non-Smoking Residence.

Reservation Deposit: A \$250 deposit is required for all confirmed residence reservations. The deposit is non-refundable if a cancellation or change is made less than 30 days prior to check-in.

Additional Fees: Refundable security deposit of \$500 due at check-in and non-refundable cleaning fee of \$40-\$60 depending on room type and length of stay.



2025 Online Program

Private Lessons	Time	1 lesson	5 lessons	10 lessons	15 lessons	20 lessons
Standard Private	To be arranged	\$95	\$420	\$790	\$1,145	\$1,525
Executive Private	To be arranged	Price upon request please contact info@cisl.edu				

Flexible start dates and schedules upon request. Please contact info@cisl.edu for more information.

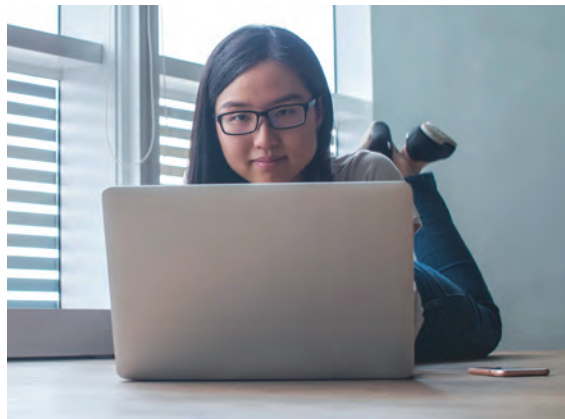
Semi-Private & Group Lessons are also available. Please contact info@cisl.edu for more information.

COURSE DESCRIPTION

CISL's online private lessons give students personal attention with flexible and convenient scheduling. Students will be able to focus on their language needs and interests. Our platform is specifically designed for language learning and private lessons are always taught by a certified English teacher.

Private Lessons Study Topics Include; *(no minimum level required)*

- English for Beginners
- Business English
- Exam training; Cambridge, IELTS, and TOEIC
- Professional areas of study include; Global Success, Executive English, English for Engineers, Aviation English or other specialty courses
- Conversation Practice
- Presentations in English



2025 Summer Programs

CISL Summer Programs								
Campus	Dates [^]	Age Range	Package Price				Room & Board	Activities
			1 Week	2 Weeks	3 Weeks	4 Weeks		
Barnard, Columbia University - New York City	June 29-Aug 10	14-17	\$2,700	\$4,900	\$6,875	\$8,900	On-campus residence with full room & board	Daily scheduled activities with weekly half & full day excursions
Pepperdine University - Malibu*	June 22 - Aug 3	10-17	\$2,400	\$4,725	\$6,680	\$8,500		
UC Berkeley - San Francisco	June 29-Aug 10	10-17	\$2,400	\$4,725	\$6,680	\$8,500		
Georgetown University - Washington D.C.	July 6 - Aug 3	13-17	\$2,400	\$4,725	\$6,680	\$8,500		
University of San Diego - San Diego	July 6 - Aug 10	13-17	\$2,400	\$4,725	\$6,680	\$8,500		
CISL San Diego Homestay - San Diego	June 22 - Aug 10	13-17	\$1,650	\$3,250	\$4,650	\$6,200	Homestay with half board	

[^] The standard arrival and departure day is Sunday.

*Optional California Coastal Trip for LA or SD attendees - 6 day trip from July 12 - 18 visiting San Francisco, Santa Barbara, Carmel, Monterey & Los Angeles. The price for the trip is equivalent to the Campus 1 Week package price.

CISL Commuter Prices - No Accommodation					
Package	Campus	1 Week	2 Weeks	3 Weeks	4 Weeks
Classes Only	ALL	\$500	\$950	\$1,350	\$1,700
Classes, Lunch, & Weekday Activities		\$1,000	\$1,900	\$2,800	\$3,700
Classes, Lunch, Weekday/Weekend Activities		\$1,300	\$2,500	\$3,800	\$4,900

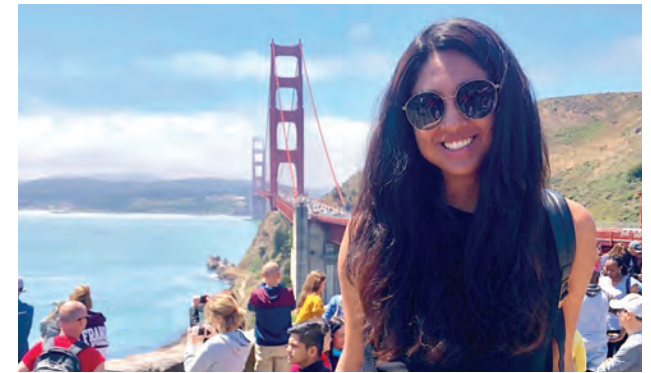


2025 Junior Winter & Spring Program




Duration	Dates	Age Range	Price	Room and Board	Activities/Excursions
1 weeks	Jan 5 - Feb 2, Mar 2-30	13-17	\$1,650	Homestay: Double Room with 14 meals per week	5 half day and 1 full day excursion
2 weeks			\$3,250		
3 weeks			\$4,650		
4 weeks			\$6,200		

Junior Course Offerings				
Course	Description	Lessons per Week	Location	
English for Future Leaders	A combination of speaking, listening, reading and writing through a project driven approach	20	ALL	
English for Higher Education*	Focus on academic writing and speaking for university bound students			
Career & Business Development*	Learn how to tackle the evolving workplace and how to take the first steps to start your own business			

*2 week course, B1+ English level required.
 After completion of a 2 week course, program can be continued with our standard English for Future Leaders course.
 Average of 14 students per class.



JUNIOR COURSES INCLUDE

-  20 lessons per week
-  24 hour supervision
-  Full Activities Program
-  WiFi
-  Full Room and Board
-  Course Certificate and Final Report

Junior Programs Airport & UNMS Fees

Airport/Destination	Round Trip Airport Transfer Fee	Additional Fees	
		UNMS Arrival	UNMS Departure
Homestay Airport Fee	\$100 each way	\$150	\$185
San Diego International Airport /University of San Diego USD	\$100 each way		
LAX/University of San Diego (USD)	\$475 each way		
LAX/Pepperdine	\$220 each way		
LaGuardia/Columbia University	\$200 each way		
JFK/Columbia University	\$250 each way		
Washington D.C. - Dulles / Georgetown University	\$200 each way		
San Francisco International Airport/ University of California, Berkeley (UCB)	\$240 each way		

ADDITIONAL INFORMATION

University of San Diego/Pepperdine University

* For students doing 2 weeks + Trip, final date of the program is July 18. Students must plan on departing this day, unless extending their program for additional weeks.

San Diego January Homestay:

Local bus/trolley pass is included.

For LAX Transportation fee contact juniorprograms@cisl.edu.

Custom San Diego Homestay Programs:

Custom Homestay Programs available at other times during the year. Please contact juniors@cisl.edu



Adult Programs Terms and Conditions

Course Confirmation and Payment

All tuition and fees must be paid in full before you start classes at CISL. Upon receipt of your application and payment, we will send you a letter confirming your acceptance. Payment may be sent by any of the following: international money order; electronic bank transfer (wire transfer), credit card (MasterCard or Visa only). We cannot process your application unless we receive your payment.

Bank Transfers

CISL will provide the school's bank information for wire transfers upon request. Please include the student's name and student ID as part of the bank transfer information. The payment must include all sending and intermediary wire transfer charges. CISL will pay all receiving fees.

I-20 Form/F-1 Student Visa

CISL is authorized to issue a Certificate of Eligibility (Form I-20) to qualifying full-time students. The I-20 form is used when applying for a student visa (F-1) and will only be issued for the number of weeks that your tuition is paid and that you are enrolled full-time (18 hours or more per week with a minimum of 4 weeks.). You can extend your course at CISL, and a revised I-20 will be issued. The visa must be obtained at the U.S. Embassy in your home country before your departure. If you are denied a student visa, you will receive a refund of all prepaid tuition (minus the \$150 application fee or other non-refundable fees).

If you require an I-20 form, you must provide CISL with documents showing that you have enough money to pay for all of your tuition and living expenses while you are studying at CISL as well as a copy of your passport and your home address. Please send these documents with your application. Financial means can be demonstrated with:

- (1) Evidence of financial means (e.g. a copy of a recent bank statement) to pay your tuition and living expenses for the duration of your stay; or
- (2) A letter of sponsorship from your parent or legal guardian accompanied by evidence of their financial means (e.g. a copy of a recent bank statement); or

(3) A letter of sponsorship from your company or organization together with evidence of its financial means.

Students taking any 20-lesson per week course and who are requesting an I-20 for a student visa will also need to take either an Afternoon Elective, private lessons, or attend a 2 lesson Study Hall session each week in order to meet the 18-hour per week minimum requirement for the student visa. Students who choose the Study Hall option will have the designation "Plus" on their confirmation (e.g. "Standard Plus"). Failure to adhere to our minimum 85% attendance policy may result in termination of I-20 and dismissal from the school.

For more information about visas and travelling to the United States, please visit the following website: <http://studyinthestates.dhs.gov/students>

Accommodations

A non-refundable accommodation placement fee of \$160 is required for all accommodations. A deposit of \$250 is required for all residence accommodations and will be applied to the total accommodation cost. If you cancel your accommodations after they have been confirmed, the deposit may not be refundable. Please read the Refund Policy carefully. If you are requesting homestay accommodations, please make flight reservations so that you arrive no later than 21:30.

Course Extension

You can extend your course after you arrive. The additional course fee must be paid before the start of the extension. You can pay the school directly or through your official CISL representative in your country.

Airport Transfers

Please send us your flight information as soon as possible. If you are requesting homestay accommodations, please make flight reservations so that you arrive before 21:30.

If you are staying with a host family the arrival airport transfer will cost \$120 and you must arrive between 9:00 and 21:30 on the weekend. Your host will meet you at the airport in the baggage claim area holding a sign with your name on it. Please be sure to carry your "Airport Transfer Confirmation" with you so that you have the emergency assistance number to call in case of a

problem. If your flight is delayed to after 21:30, you will need to take a taxi or shuttle van to the host's home at your own expense. If your flight arrives Monday-Friday, please contact the school in advance to make arrangements for getting from the airport to your host family's home. For students not staying with a host family (or those arriving late or on weekdays) a private transfer service is available for \$150 (one-way).

Medical Insurance

The school does not provide medical insurance. However, we strongly recommend that you purchase medical insurance for travelers to the United States or you ensure that your current policy is valid in the United States. You should do this before departing your country. Medical treatment in the United States is very expensive. You are responsible for any medical expenses incurred, so please be sure that you review the terms of your insurance policy, including covered services, deductibles, co-payments, length of coverage, etc., prior to arrival.

Liability

CISL, its staff, and its representatives will not be liable for loss, damage or injury to persons or property however caused, except where liability is expressly imposed beyond exclusion by statute.

Media Release

Students agree to allow photos and videos taken during CISL programs to be used for publicity purposes.

Change Fee

A \$100 course or accommodation change fee may be charged.

Junior Programs Terms and Conditions

Age

Programs are for students between the ages of 10 and 17.

Program Application

A parent or guardian must complete the 2025 CISL Junior Program application (with their signature) in order to enroll a student into one of the CISL Junior Programs.

Airport Transfers:

Junior Programs- Airport transfers are NOT included, but are an option for an additional fee. Please contact juniors@cisl.edu.

Unaccompanied Minor Service- Additional applicable fees will be applied for any student requesting the Unaccompanied Minor Service (UNMS) from CISL. **These fees are in addition to the airline UNMS fees.** Please contact Junior Program Director for information and pricing at juniors@cisl.edu.

Group Leaders

Accommodations, transportation, and activities/excursions for one group leader are included for each group of 15 students. Group leaders will be required to sign agreement prior to arrival. Please contact juniors@cisl.edu for more information.

Insurance

The junior programs do not provide medical insurance. Each student and group leader must have medical insurance and proof of this insurance is required prior to arrival. Please ensure that your policy is valid in the United States. Medical treatment in the United States is very expensive. You are responsible for any medical expenses incurred, so please be sure that you review the terms of your insurance policy, including covered services, deductibles, co-payments, length of coverage, etc., prior to arrival. Parents must also sign a waiver allowing CISL staff to act as guardians on their behalf should it become necessary for a medical issue.

Refundable Security Deposit / Residential Programs:

A \$150 refundable security deposit is required upon arrival to the campus; deposit is returned after check-out is completed by CISL and University Staff to ensure nothing is lost or broken. Security deposit may also be withheld for rule infractions.

Refund and Cancellation Policy

Please refer to the junior application for the refund and cancellation policy. All prices and conditions are subject to change.

Media Release

Students agree to allow photos and videos taken during the program to be used for publicity purposes.

Liability

CISL, its staff, and its representatives will not be liable for loss, damage or injury to persons or property however caused, except where liability is expressly imposed beyond exclusion by statute.



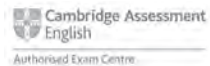


San Diego Adult Programs:
636 Broadway, Suite 210
San Diego, California 92101 USA
Ph. +1 619 239 3363
E-mail: info@cisl.edu

San Diego Junior Programs:
636 Broadway, Suite 210
San Diego, California 92101 USA
Ph. +1 619 239 3363
E-mail: juniors@cisl.edu

For more information visit cisl.edu

The mission of Converse International School of Languages (CISL) is to help our clients learn to communicate effectively and with confidence in English.



CISL is fully accredited by the Commission for English Language Accreditation (CEA), which is recognized by the U.S. Secretary of Education and is the only specialized accrediting agency for English language programs in the United States.