



2025 Course Prices & Information

Junior Programs

Since 1972



2025 Summer Programs

CISL Summer Programs								
Campus	Dates [^]	Age Range	Package Price				Room & Board	Activities
			1 Week	2 Weeks	3 Weeks	4 Weeks		
Barnard, Columbia University - New York City	June 29-Aug 9	14-17	\$2,700	\$4,900	\$6,875	\$8,900	On-campus residence with full room & board	Daily scheduled activities with weekly half & full day excursions
Pepperdine University - Malibu*	June 22 - Aug 3	10-17	\$2,400	\$4,725	\$6,680	\$8,500		
UC Berkeley - San Francisco	June 29-Aug 10	10-17	\$2,400	\$4,725	\$6,680	\$8,500		
Georgetown University - Washington D.C.	June 29 - Aug 3	13-17	\$2,400	\$4,725	\$6,680	\$8,500		
University of San Diego - San Diego	July 6 - Aug 10	13-17	\$2,400	\$4,725	\$6,680	\$8,500		
CISL San Diego Homestay - San Diego	June 22 - Aug 10	13-17	\$1,650	\$3,250	\$4,650	\$6,200	Homestay with half board	

[^] The standard arrival and departure day is Sunday with the exception of Barnard, Columbia University which has a Sunday arrival and Saturday departure.
 *Optional California Coastal Trip for LA or SD attendees - 6 day trip from July 12 - 18 visiting San Francisco, Santa Barbara, Carmel, Monterey & Los Angeles. The price for the trip is equivalent to the Campus 1 Week package price.

CISL Commuter Prices - No Accommodation					
Package	Campus	1 Week	2 Weeks	3 Weeks	4 Weeks
Classes Only	ALL	\$500	\$950	\$1,350	\$1,700
Classes, Lunch, & Weekday Activities		\$1,000	\$1,900	\$2,800	\$3,700
Classes, Lunch, Weekday/Weekend Activities		\$1,300	\$2,500	\$3,800	\$4,900

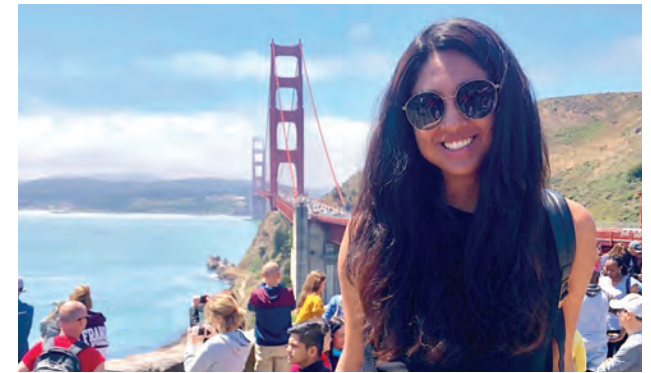


2025 Junior Winter & Spring Program

Duration	Dates	Age Range	Price	Room and Board	Activities/Excursions
1 weeks	Jan 5 - Feb 2, Mar 2-30	13-17	\$1,650	Homestay: Double Room with 14 meals per week	5 half day and 1 full day excursion
2 weeks			\$3,250		
3 weeks			\$4,650		
4 weeks			\$6,200		

Junior Course Offerings				
Course	Description	Lessons per Week	Location	
English for Future Leaders	A combination of speaking, listening, reading and writing through a project driven approach	20	ALL	
English for Higher Education*	Focus on academic writing and speaking for university bound students			
Career & Business Development*	Learn how to tackle the evolving workplace and how to take the first steps to start your own business			

*2 week course, B1+ English level required.
 After completion of a 2 week course, program can be continued with our standard English for Future Leaders course.
 Average of 14 students per class.



JUNIOR COURSES INCLUDE

-  20 lessons per week
-  24 hour supervision
-  Full Activities Program
-  WiFi
-  Full Room and Board
-  Course Certificate and Final Report

Junior Programs Airport & UNMS Fees

Airport/Destination	Round Trip Airport Transfer Fee	Additional Fees	
		UNMS Arrival	UNMS Departure
Homestay Airport Fee	\$100 each way	\$150	\$185
San Diego International Airport /University of San Diego USD	\$100 each way		
LAX/University of San Diego (USD)	\$475 each way		
LAX/Pepperdine	\$220 each way		
LaGuardia/Columbia University	\$200 each way		
JFK/Columbia University	\$250 each way		
Washington D.C. - Dulles / Georgetown University	\$200 each way		
San Francisco International Airport/ University of California, Berkeley (UCB)	\$240 each way		

ADDITIONAL INFORMATION

University of San Diego/Pepperdine University

* For students doing 2 weeks + Trip, final date of the program is July 18. Students must plan on departing this day, unless extending their program for additional weeks.

San Diego January Homestay:

Local bus/trolley pass is included.

For LAX Transportation fee contact juniorprograms@cisl.edu.

Custom San Diego Homestay Programs:

Custom Homestay Programs available at other times during the year. Please contact juniors@cisl.edu



Junior Programs Terms and Conditions

Age

Programs are for students between the ages of 10 and 17.

Program Application

A parent or guardian must complete the 2025 CISL Junior Program application (with their signature) in order to enroll a student into one of the CISL Junior Programs.

Airport Transfers:

Junior Programs- Airport transfers are NOT included, but are an option for an additional fee. Please contact juniors@cisl.edu.

Unaccompanied Minor Service- Additional applicable fees will be applied for any student requesting the Unaccompanied Minor Service (UNMS) from CISL. **These fees are in addition to the airline UNMS fees.** Please contact Junior Program Director for information and pricing at juniors@cisl.edu.

Group Leaders

Accommodations, transportation, and activities/excursions for one group leader are included for each group of 15 students. Group leaders will be required to sign agreement prior to arrival. Please contact juniors@cisl.edu for more information.

Insurance

The junior programs do not provide medical insurance. Each student and group leader must have medical insurance and proof of this insurance is required prior to arrival. Please ensure that your policy is valid in the United States. Medical treatment in the United States is very expensive. You are responsible for any medical expenses incurred, so please be sure that you review the terms of your insurance policy, including covered services, deductibles, co-payments, length of coverage, etc., prior to arrival. Parents must also sign a waiver allowing CISL staff to act as guardians on their behalf should it become necessary for a medical issue.

Refundable Security Deposit / Residential Programs:

A \$150 refundable security deposit is required upon arrival to the campus; deposit is returned after check-out is completed by CISL and University Staff to ensure nothing is lost or broken. Security deposit may also be withheld for rule infractions.

Refund and Cancellation Policy

Please refer to the junior application for the refund and cancellation policy. All prices and conditions are subject to change.

Media Release

Students agree to allow photos and videos taken during the program to be used for publicity purposes.

Liability

CISL, its staff, and its representatives will not be liable for loss, damage or injury to persons or property however caused, except where liability is expressly imposed beyond exclusion by statute.



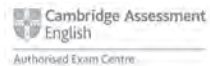


San Diego Adult Programs:
636 Broadway, Suite 210
San Diego, California 92101 USA
Ph. +1 619 239 3363
E-mail: info@cisl.edu

San Diego Junior Programs:
636 Broadway, Suite 210
San Diego, California 92101 USA
Ph. +1 619 239 3363
E-mail: juniors@cisl.edu

For more information visit cisl.edu

The mission of Converse International School of Languages (CISL) is to help our clients learn to communicate effectively and with confidence in English.



CISL is fully accredited by the Commission for English Language Accreditation (CEA), which is recognized by the U.S. Secretary of Education and is the only specialized accrediting agency for English language programs in the United States.